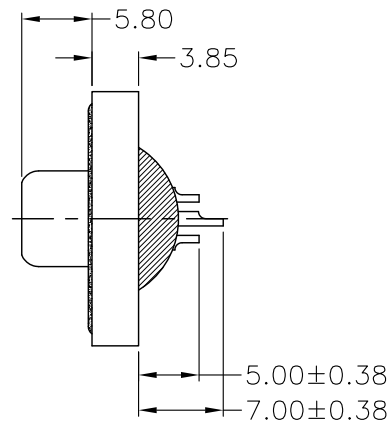
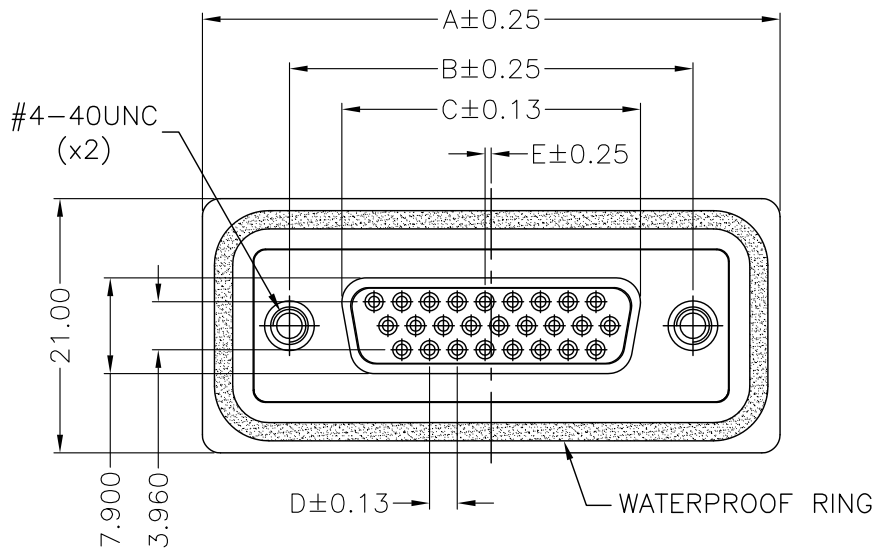


REV.	DESCRIPTION	DATE
1	PRELIMINARY	Sep. 20, 2018
2	WATERPROOF LEVEL	Oct. 05, 2018



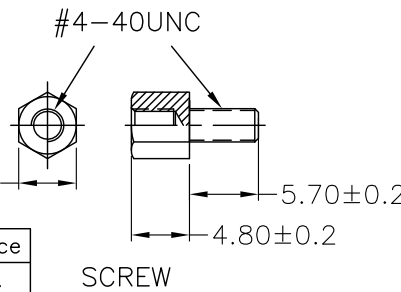
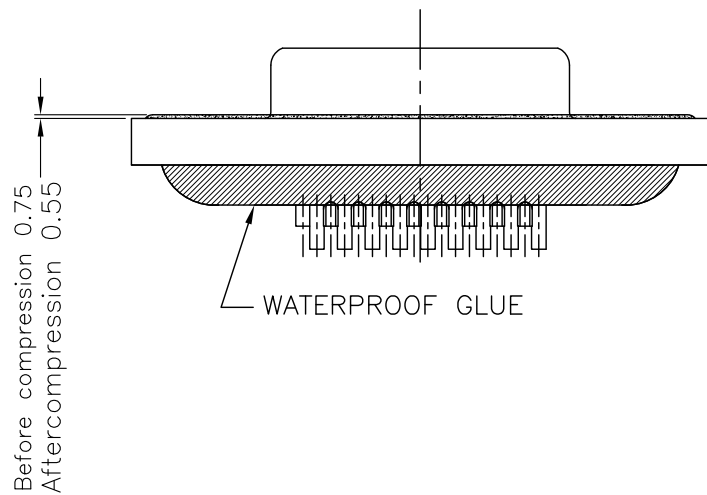
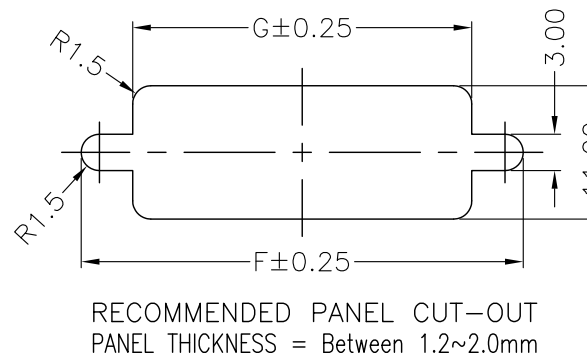
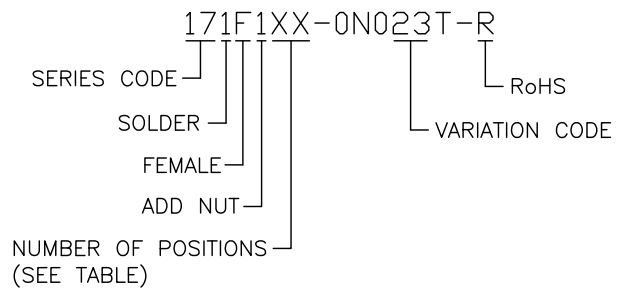
MATERIALS

- HOUSING : P.B.T, (UL 94V-0), BLACK.
- TERMINAL : BRASS, GOLD FLASH PLATED OVER NICKEL
- SHELL : SPCC, NICKEL PLATING.
- BOARDLOCK : COPPER ALLOY, TIN PLATING.
- RIVET : COPPER ALLOY, NICKEL PLATING.
- WATERPROOF RING : SILICA GEL.
- WATERPROOF GLUE : EPOXY.
- SCREW : COPPER ALLOY, NICKEL PLATING.

SPECIFICATION

- CURRENT RATING : 5 AMP./PIN MAX.
- RATING VOLTAGE : 250V AC MAX.
- DIELECTRIC WITHSTANDING VOLTAGE : 1000V AC R.M.S. FOR ONE MINUTE.
- INSULATION RESISTANCE : 5000M OHMS MIN.
- CONTACT RESISTANCE : 10m OHMS MAX.
- OPERATING TEMPERATURE : -55°C TO +85°C.
- WATERPROOF LEVEL : IP-X7
- SCREWING TORQUE : 3.0Kgf./cm MAX.

PART NUMBER INFORMATION :



(TABLE)

PIN	A	B	C	D	E	F	G	Mating Force	Unmating Force
15P	39.40	24.99	16.33	2.29	0.25	28.20	20.00	7.2Kgf Max.	1.2Kgf Min.
26P	47.70	33.32	24.66	2.29	0.51	36.50	28.00	12.7Kgf Max.	2.1Kgf Min.
44P	64.50	47.04	38.38	2.29	0.51	51.00	41.50	20.8Kgf Max.	3.5Kgf Min.
62P	77.80	63.50	54.84	2.41	0.58	67.50	58.50	28.9Kgf Max.	4.8Kgf Min.

TOLERANCE .0=± .00=±0.25 .000=±0.13 .0000= ANG.=±3°		DRAWER <i>NPOLE</i>		 WWW.ASTRON.COM.TW
UNITS : mm		CHECK <i>ALAN</i>		
SCALE NONE SIZE A4		APP'D <i>ERJE</i>		NAME D-SUB FEMALE, SOLDER TYPE WATERPROOF
SHEET 1 OF 1		REV. 2		DRAW NO. 171F1XX-0N023T-R
				07002