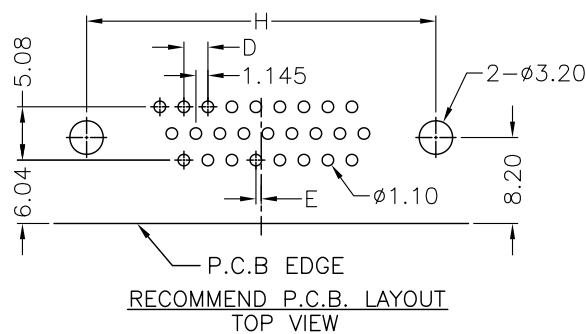
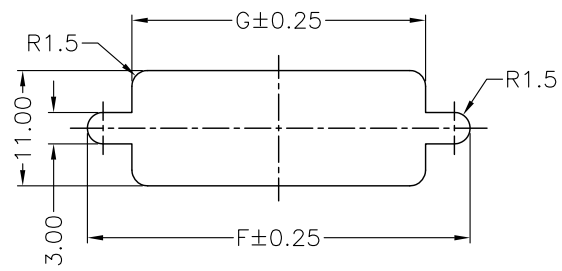
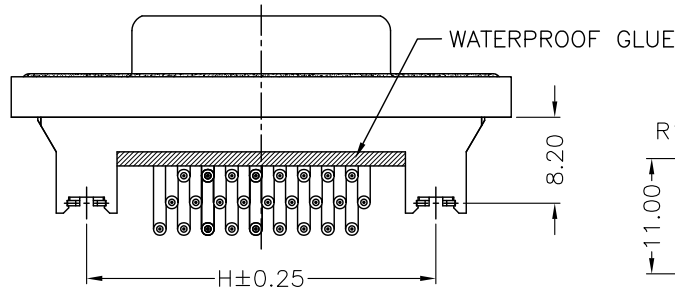
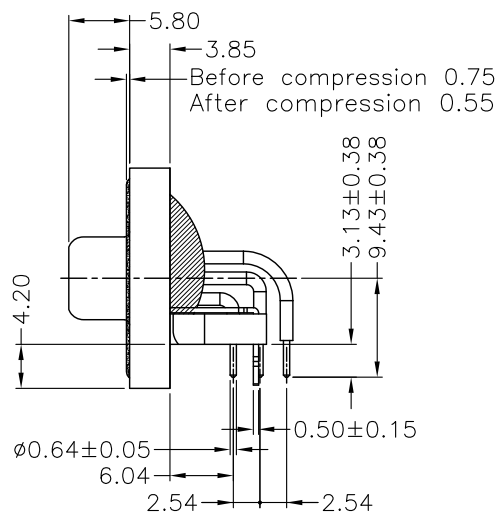
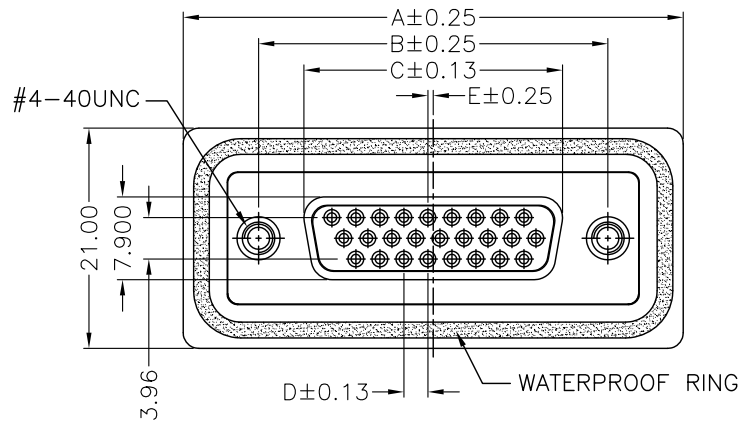
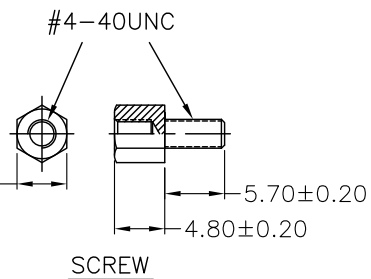


| REV. | DESCRIPTION      | DATE          |
|------|------------------|---------------|
| 1    | PRELIMINARY      | Sep. 20, 2018 |
| 2    | WATERPROOF LEVEL | Oct. 05, 2018 |



RECOMMENDED PANEL CUT-OUT  
PANEL THICKNESS = Between 1.2~2.0mm



**MATERIALS**

- HOUSING : P.B.T, (UL 94V-0), BLACK.
- TERMINAL : BRASS, GOLD FLASH PLATED OVER NICKEL
- SHELL : SPCC, NICKEL PLATING.
- BOARDLOCK : COPPER ALLOY, TIN PLATING.
- RIVET : COPPER ALLOY, NICKEL PLATING.
- WATERPROOF RING : SILICA GEL.
- WATERPROOF GLUE : EPOXY.
- SCREW : COPPER ALLOY, NICKEL PLATING.

**SPECIFICATION**

- CURRENT RATING : 5 AMP. MAX.
- RATING VOLTAGE : 250V AC MAX.
- DIELECTRIC WITHSTANDING VOLTAGE : 1000V AC R.M.S. FOR ONE MINUTE.
- INSULATION RESISTANCE : 5000M OHMS MIN.
- CONTACT RESISTANCE : 10m OHMS MAX.
- OPERATING TEMPERATURE : -55°C TO +85°C.
- WATERPROOF LEVEL : IP-X7
- SCREWING TORQUE : 3.0 Kgf./cm Max.

**PART NUMBER INFORMATION :**

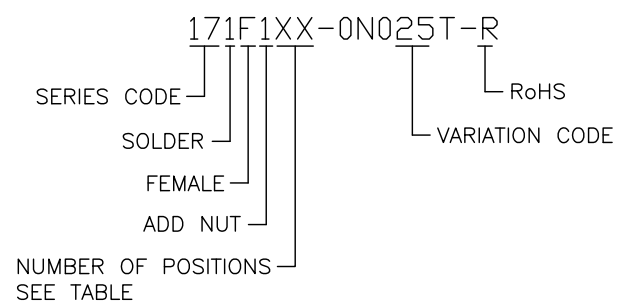


TABLE :

| NO. | A     | B     | C     | D    | E    | F     | G     | H     | Mating Force  | Unmating Force |
|-----|-------|-------|-------|------|------|-------|-------|-------|---------------|----------------|
| 15P | 39.40 | 24.99 | 16.33 | 2.29 | 0.25 | 28.20 | 20.00 | 24.99 | 7.2 Kgf Max.  | 1.2 Kgf Min.   |
| 26P | 47.70 | 33.32 | 24.66 | 2.29 | 0.51 | 36.50 | 28.00 | 33.32 | 12.7 Kgf Max. | 2.1 Kgf Min.   |
| 44P | 64.50 | 47.04 | 38.38 | 2.29 | 0.51 | 51.00 | 41.50 | 47.04 | 20.8 Kgf Max. | 3.5 Kgf Min.   |
| 62P | 77.80 | 63.50 | 54.84 | 2.41 | 0.58 | 67.50 | 58.00 | 63.50 | 28.9 Kgf Max. | 4.8 Kgf Min.   |

|  |            |                        |   |                              |
|--|------------|------------------------|---|------------------------------|
| TOLERANCE<br>.0=±<br>.00=±0.25<br>.000=±0.13<br>ANG.=±3' |            | DRAWER<br><i>NFOLE</i> |   | <br><b>WWW.ASTRON.COM.TW</b> |
| <br>UNITS : mm   |            | CHECK<br><i>ALAN</i>   | NAME<br>D-SUB FEMALE, R/A, WATERPROOF SOLDER TYPE |                              |
|  |            | APP'D<br><i>ERJE</i>   | DRAW NO.<br>171F1XX-0N025T-R                      |                              |
| SCALE<br>NONE  | SIZE<br>A4 | SHEET<br>1 OF 1        | REV.<br>2   | 07002                        |