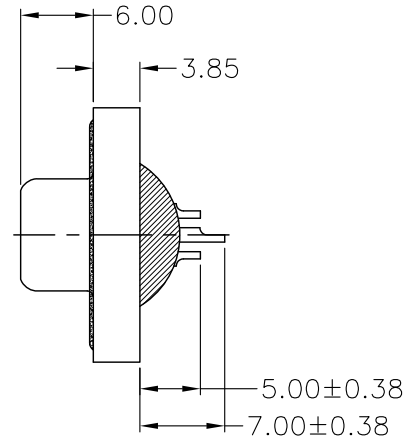
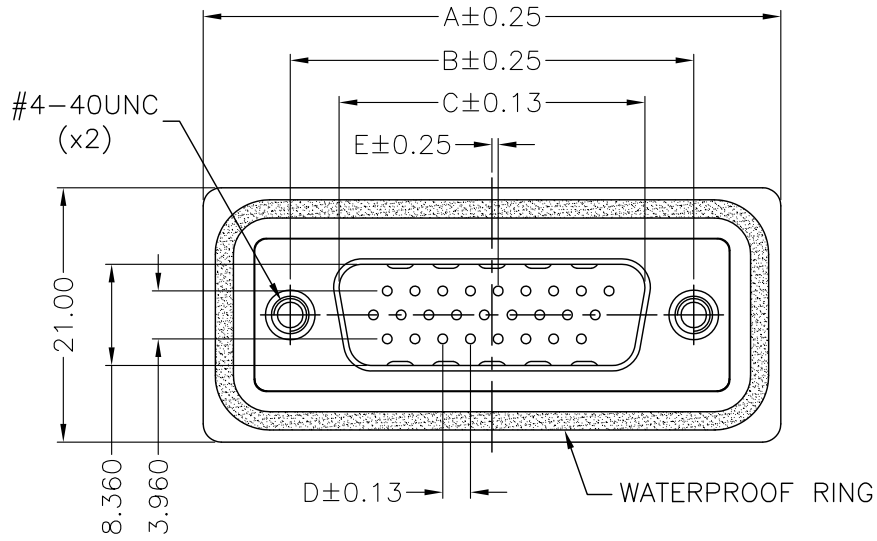


REV.	DESCRIPTION	DATE
1	PRELIMINARY	Sep. 20, 2018
2	WATERPROOF LEVEL	Oct. 05, 2018

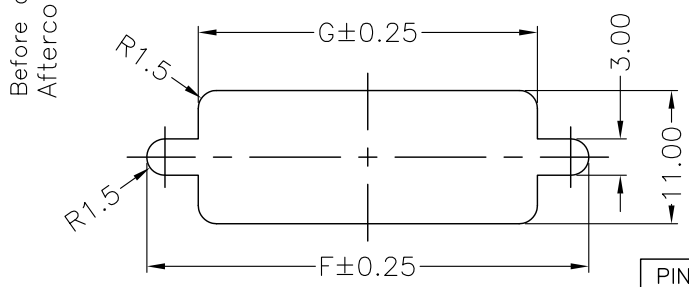
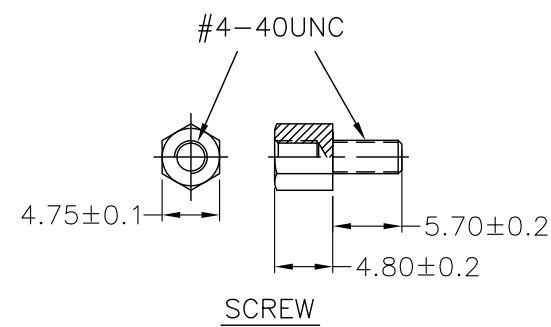
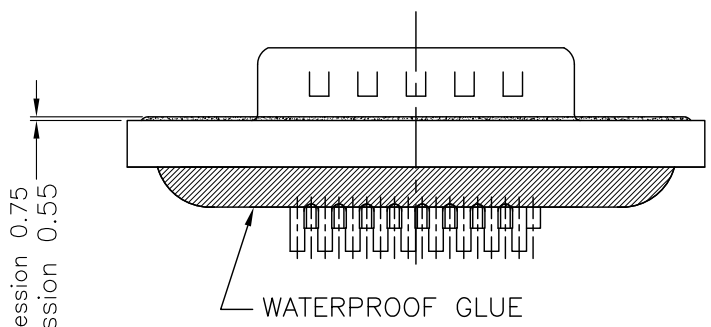


**MATERIALS**

- HOUSING : P.B.T, (UL 94V-0), BLACK.
- TERMINAL : BRASS,  
GOLD FLASH PLATED OVER NICKEL
- SHELL : SPCC, NICKEL PLATING.
- BOARDLOCK : COPPER ALLOY, TIN PLATING.
- RIVET : COPPER ALLOY, NICKEL PLATING.
- WATERPROOF RING : SILICA GEL.
- WATERPROOF GLUE : EPOXY.
- SCREW : COPPER ALLOY, NICKEL PLATING.

**SPECIFICATION**

- CURRENT RATING : 5 AMP./PIN MAX.
- RATING VOLTAGE : 250V AC MAX.
- DIELECTRIC WITHSTANDING VOLTAGE :  
1000V AC R.M.S. FOR ONE MINUTE.
- INSULATION RESISTANCE : 5000M OHMS MIN.
- CONTACT RESISTANCE : 10m OHMS MAX.
- OPERATING TEMPERATURE : -55°C TO +85°C.
- WATERPROOF LEVEL : IP-X7
- SCREWING TORQUE : 3.0Kgf./cm MAX.



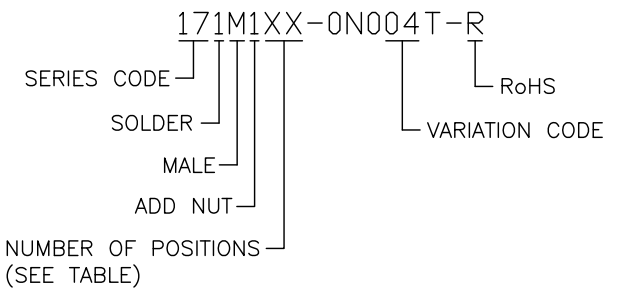
PIN	Mating Force	Unmating Force
15P	7.2Kgf Max.	1.2Kgf Min.
26P	12.7Kgf Max.	2.1Kgf Min.
44P	20.8Kgf Max.	3.5Kgf Min.
62P	28.9Kgf Max.	4.8Kgf Min.

(TABLE)

PIN	A	B	C	D	E	F	G
15P	39.40	24.99	16.92	2.29	0.25	28.20	20.00
26P	47.70	33.32	25.25	2.29	0.51	36.50	28.00
44P	64.50	47.04	38.96	2.29	0.51	51.00	41.50
62P	77.80	63.50	55.42	2.41	0.58	67.50	58.50

RECOMMENDED PANEL CUT-OUT  
PANEL THICKNESS = Between 1.2~2.0mm

**PART NUMBER INFORMATION :**



<b>TOLERANCE</b> .0=± .00=±0.25 .000=±0.13 .0000= ANG.=±3°		<b>DRAWER</b> <i>NFOLE</i> <b>CHECK</b> <i>ALAN</i> <b>APP'D</b> <i>ERJE</i>	<b>Astron</b> <b>WWW.ASTRON.COM.TW</b> D-SUB MALE, SOLDER TYPE WATERPROOF
<b>UNITS : mm</b> 		<b>PRODUCT SPEC.</b> _____	
<b>SCALE</b> NONE	<b>SIZE</b> A4	<b>SHEET</b> 1 OF 1	<b>REV.</b> 2
<b>DRAW NO.</b> 171M1XX-0N004T-R			<b>07002</b>