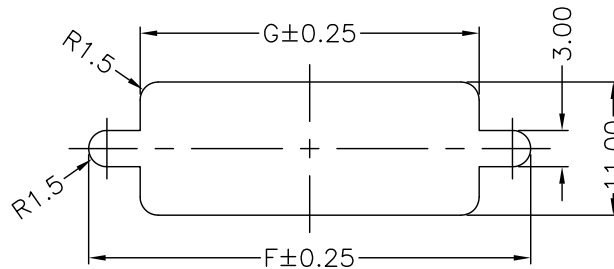
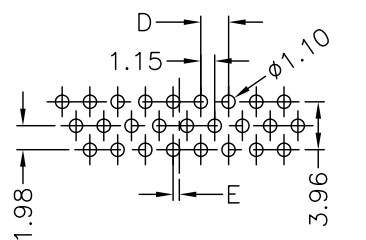
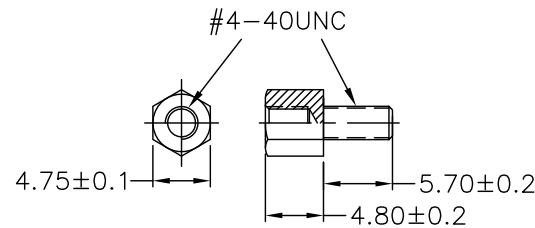
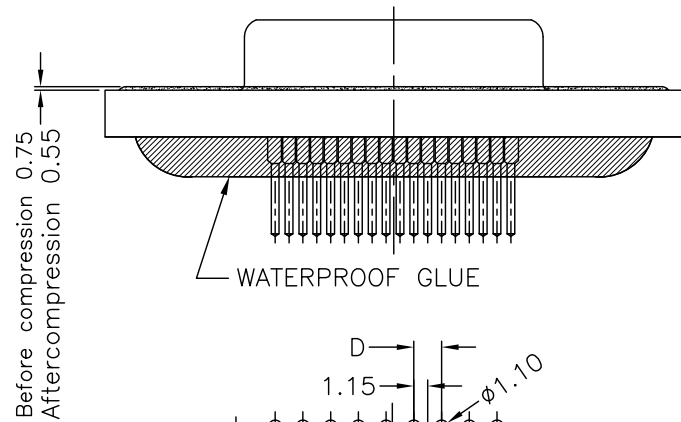
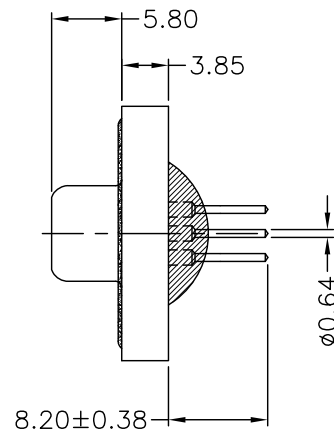
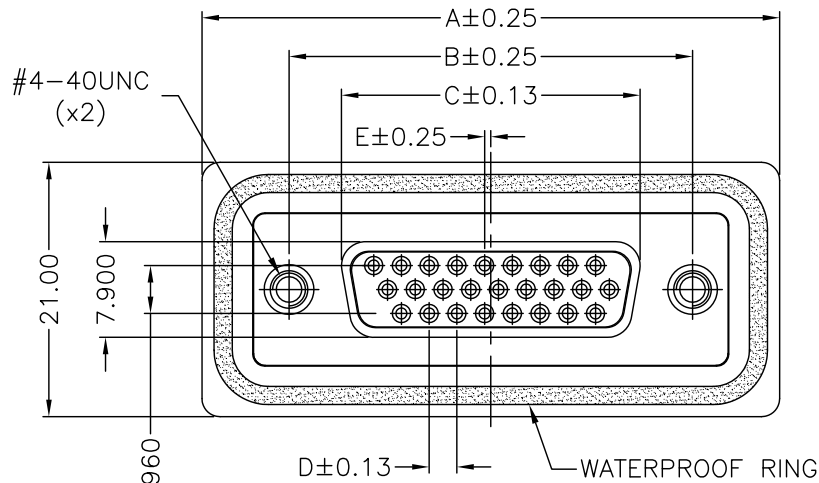


REV.	DESCRIPTION	DATE
1	PRELIMINARY	Sep. 20, 2018
2	WATERPROOF LEVEL	Oct. 05, 2018



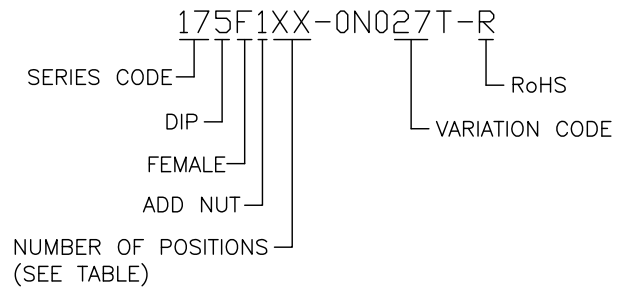
MATERIALS

- HOUSING : P.B.T, (UL 94V-0), BLACK.
- TERMINAL : BRASS, GOLD FLASH PLATED OVER NICKEL
- SHELL : SPCC, NICKEL PLATING.
- BOARDLOCK : COPPER ALLOY, TIN PLATING.
- RIVET : COPPER ALLOY, NICKEL PLATING.
- WATERPROOF RING : SILICA GEL.
- WATERPROOF GLUE : EPOXY.
- SCREW : COPPER ALLOY, NICKEL PLATING.

SPECIFICATION

- CURRENT RATING : 5 AMP./PIN MAX.
- RATING VOLTAGE : 250V AC MAX.
- DIELECTRIC WITHSTANDING VOLTAGE : 1000V AC R.M.S. FOR ONE MINUTE.
- INSULATION RESISTANCE : 5000M OHMS MIN.
- CONTACT RESISTANCE : 10m OHMS MAX.
- OPERATING TEMPERATURE : -55°C TO +85°C.
- WATERPROOF LEVEL : IP-X7
- SCREWING TORQUE : 3.0Kgf./cm MAX.

PART NUMBER INFORMATION :



RECOMMEND P.C.B. LAYOUT
TOP VIEW

RECOMMENDED PANEL CUT-OUT
PANEL THICKNESS = Between 1.2~2.0mm

(TABLE)

PIN	A	B	C	D	E	F	G	Mating Force	Unmating Force
15P	39.40	24.99	16.33	2.29	0.25	28.20	20.00	7.2Kgf Max.	1.2Kgf Min.
26P	47.70	33.32	24.66	2.29	0.51	36.50	28.00	12.7Kgf Max.	2.1Kgf Min.
44P	64.50	47.04	38.38	2.29	0.51	51.00	41.50	20.8Kgf Max.	3.5Kgf Min.

TOLERANCE .0=± .00=±0.25 .000=±0.13 .0000= ANG.=±3°		DRAWER <i>NFC0LB</i>		NAME Astron WWW.ASTRON.COM.TW
UNITS : mm		CHECK <i>ALAN</i>		
SCALE NONE		APP'D <i>ERFB</i>		DRAW NO. 175F1XX-0N027T-R
SIZE A4		PRODUCT SPEC. ---		
SHEET 1 OF 1		REV. 2		07002