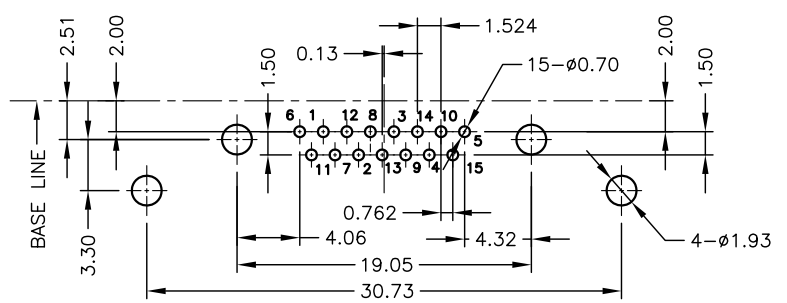
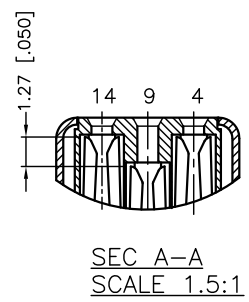
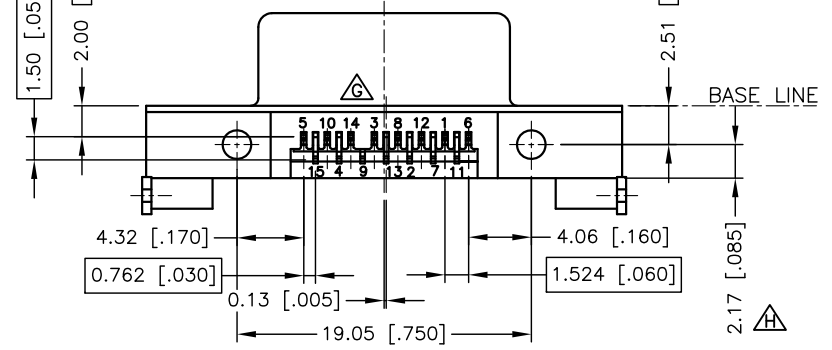
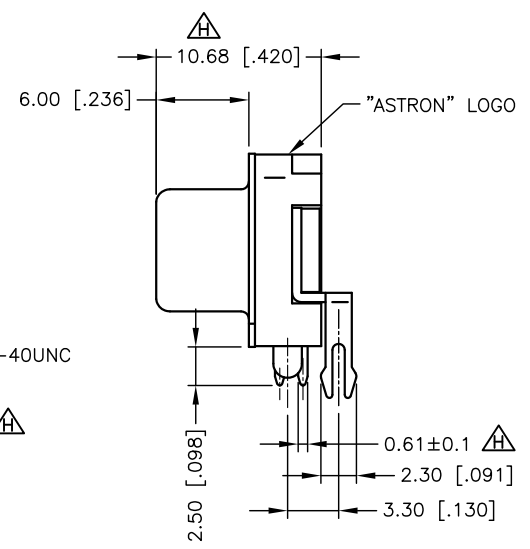
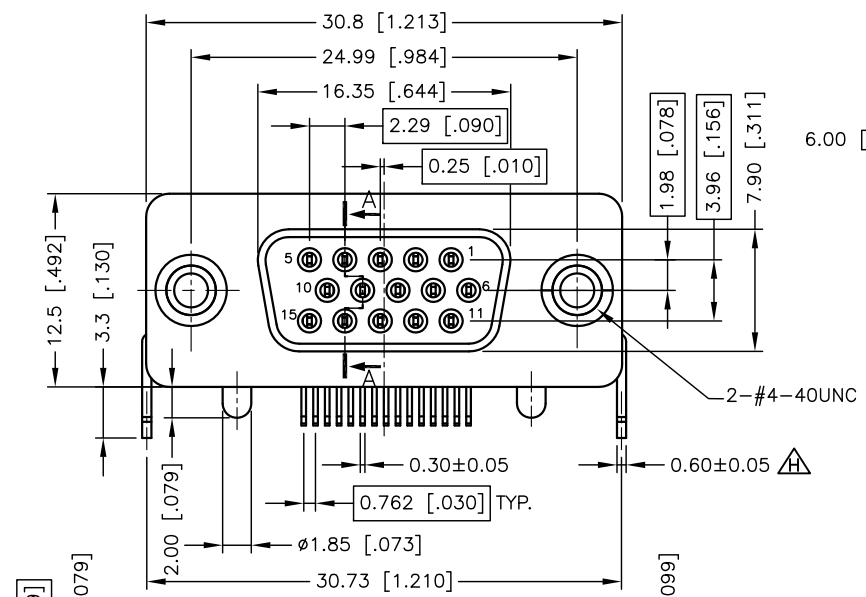


REV.	ECN NO.	DATE
A	RELEASE	Nov 06,2002
B	02'1234	Dec 16,2002
C	03'1102	Nov 04,2003
D	04'1125	Nov 13,2004
E	05'0420	Apr. 09,2005
F	06'0442	Apr. 28,2006
G	07'0158	Jan. 30,2007
H	09'1265	Dec. 26,2009



RECOMMEND P.C.B. LAYOUT
TOLERANCE ±0.05
TOP VIEW

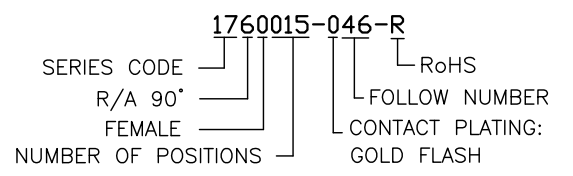
MATERIALS

- HOUSING: PPS (UL 94V-0),BLUE.
- TERMINAL: COPPER ALLOY,t=0.30mm
GOLD PLATED ON CONTACT AREA,
TIN PLATED ON SOLDER TAIL,
UNDER NICKEL PLATED.
- BOARDLOCK: COPPER ALLOY,t=0.60mm
TIN PLATED OVERALL
- SHELL: STEEL,t=0.40mm,NICKEL PLATED OVERALL.
- RIVET: ZN ALLOY.
NICKEL PLATED OVERALL.

SPECIFICATIONS

- CURRENT RATING: 1A MAX.
- INSULATION RESISTANCE:
1000 MΩ MIN AT 500V DC.
- DIELECTRIC WITHSTANDING VOLTAGE:
500V(r.m.s) AC R.M.S. FOR 1 MINUTE.
- CONTACT RESISTANCE: 30 mΩ MAX.
- OPERATING TEMPERATURE: -55°C TO +105°C.

ORDER INFORMATION:



TOLERANCE .0=±0.38 [.015] .00=±0.25 [.010] .000=±0.15 [.006] ANG.=±3°		DRAWER <i>Great</i> CHECK <i>Eric</i> APP'D <i>Dwin</i>		 ASTRON TECHNOLOGY CORP. NAME HDD-SUB 15PIN W/AT LOGO SLIM (RoHS)	
 PRODUCT SPEC.		DRAW NO. R1760015-046			
UNITS : mm [inch]		SCALE NONE SIZE A4 SHEET 1 OF 1 REV. H			