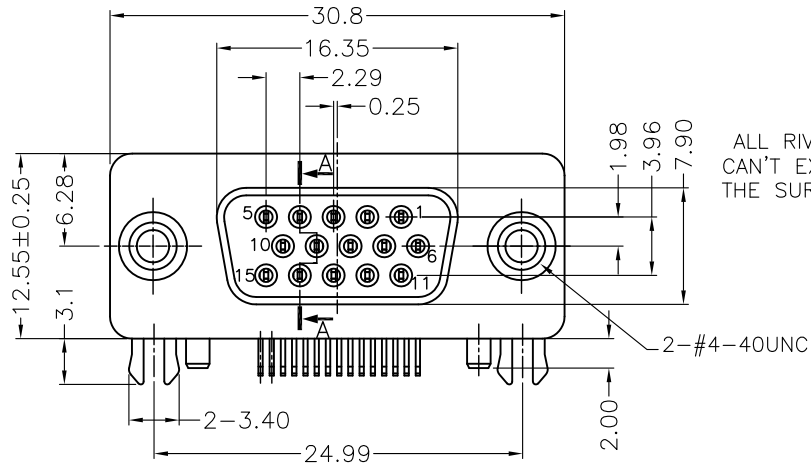
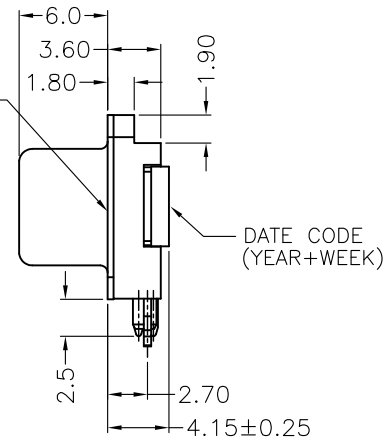


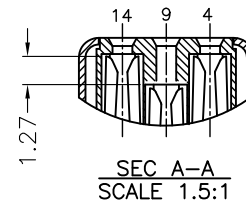
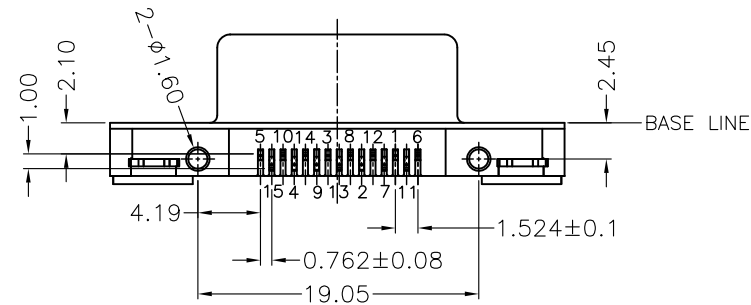
| REV. | DESCRIPTION  | DATE         |
|------|--------------|--------------|
| A    | RELEASE      | Mar 25, 2011 |
| B    | N16'12003    | Dec 09, 2016 |
| C    | SPEC. MODIFY | Mar 14, 2018 |



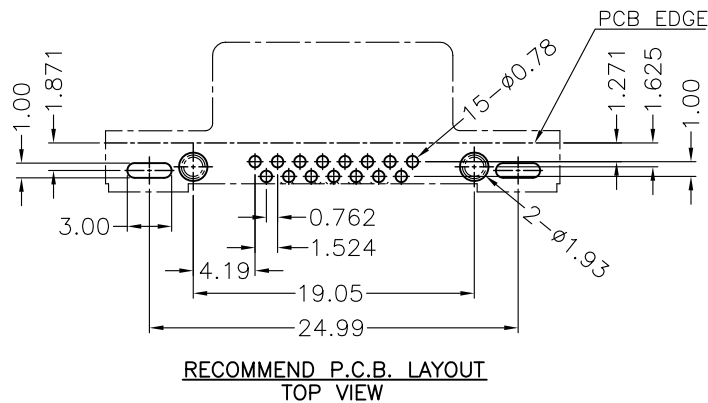
ALL RIVETS  
CAN'T EXCEED  
THE SURFACE



DATE CODE  
(YEAR+WEEK)



SEC A-A  
SCALE 1.5:1



RECOMMEND P.C.B. LAYOUT  
TOP VIEW

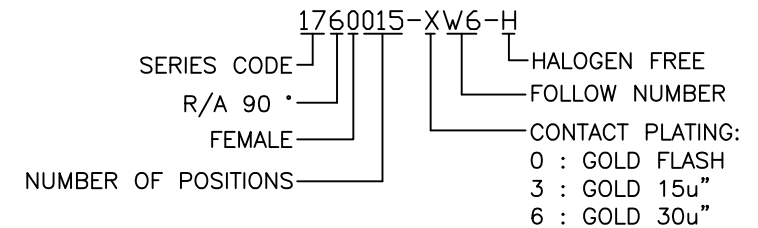
### MATERIALS:

- HOUSING : PA9T (UL94V-0) BLUE 300C.  $\triangle B$
- TERMINAL : COPPER ALLOY,  
GOLD PLATED ON CONTACT AREA,  
TIN PLATED ON SOLDER OVER,  
NICKEL UNDER PLATED OVER ALL.
- SHELL : SPCC, NICKEL PLATED OVER ALL.
- BOARD LOCK : COPPER ALLOY, MATTE TIN PLATED OVER ALL.
- RIVET : Zn ALLOY. NICKEL PLATED OVER ALL.

### SPECIFICATION

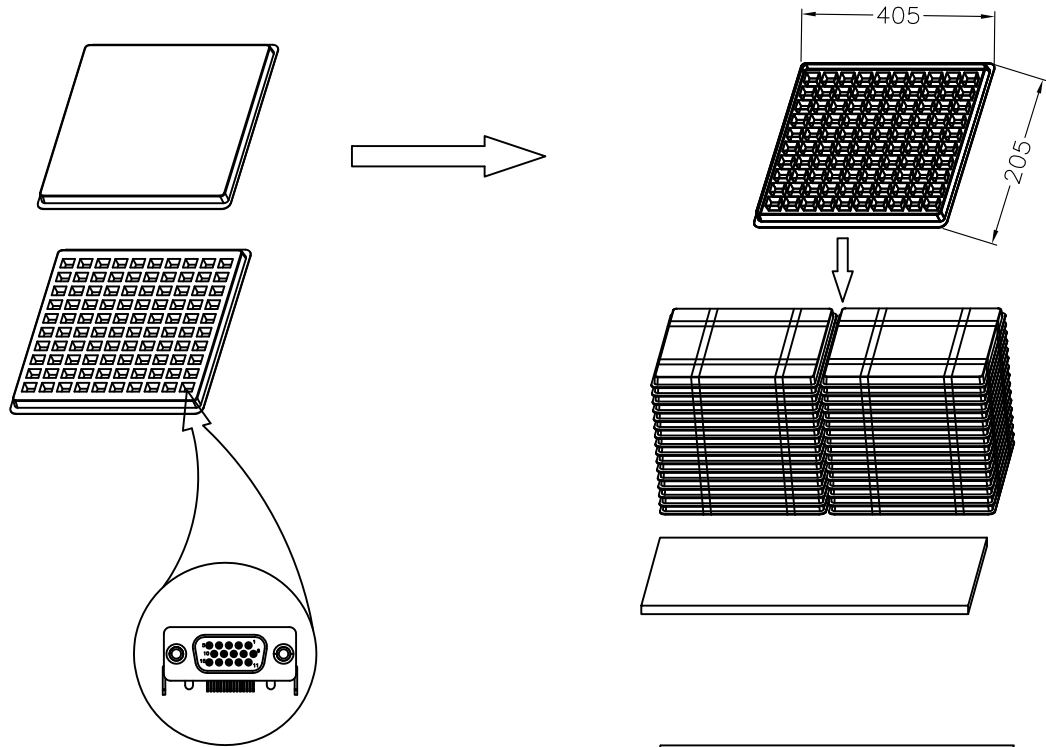
- CURRENT RATING : 1 A MAX.
- DIELECTRIC WITHSTANDING VOLTAGE :  
500V AC R.M.S. FOR ONE MINUTE.
- CONTACT RESISTANCE : 30m $\Omega$  MAX.
- INSULATION RESISTANCE :  
1000 M $\Omega$  MIN. AT 500V DC.
- $\triangle A$  OPERATING TEMPERATURE : -55°C TO +105°C.
- $\triangle B$  MAX. PROCESSING TEMPERATURE :  
230°C FOR 30~60 SECONDS.  
260°C FOR 10 SECONDS.

### PART NUMBER INFORMATION :



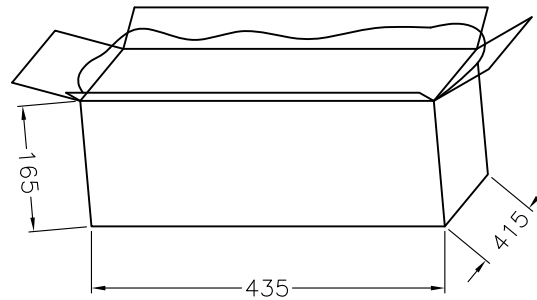
|                |      |                      |      |   |
|----------------|------|----------------------|------|---|
| TOLERANCE      |      | DRAWER               |      | <br><b>WWW.ASTRON.COM.TW</b><br>NAME<br>HDD-SUB 15PIN SLIM TYPE II<br>(HALOGEN FREE)<br>DRAW NO.<br>1760015-XW6-H |
| .0=±0.25       |      | N76028               |      |   |
| .00=±0.15      |      | CHECK                |      |   |
| .000=±0.05     |      | JIN                  |      |   |
| ANG.=±3°       |      | APP'D                |      |   |
| <br>UNITS : mm |      | BRJ<br>PRODUCT SPEC. |      |   |
| SCALE          | SIZE | SHEET                | REV. | 13004   |
| NONE           | A4   | 1 OF 2               | C    |   |

| REV. | DESCRIPTION  | DATE         |
|------|--------------|--------------|
| A    | RELEASE      | Mar 25, 2011 |
| B    | N16'12003    | Dec 09, 2016 |
| C    | SPEC. MODIFY | Mar 14, 2018 |



QUANTITY:

1. 100PCS/TRAY
2. 20TYAR/CARTON



|   |                        |                                |  |
|---|------------------------|--------------------------------|--|
| <b>TOLERANCE</b><br>.0=±0.25<br>.00=±0.15<br>.000=±0.05<br>ANG.=±3° |                        | <b>DRAWER</b><br><i>NFB028</i> | <br><b>WWW.ASTRON.COM.TW</b>                   |
| <br>UNITS : mm  |                        | <b>CHECK</b><br><i>JFY</i>     |  |
| <b>SCALE</b><br>NONE  |                        | <b>APP'D</b><br><i>BRJ</i>     | <b>PRODUCT SPEC.</b><br>DRAW NO. 1760015-XW6-H |
| <b>SIZE</b><br>A4   | <b>SHEET</b><br>2 OF 2 | <b>REV.</b><br>C               | 13004  |