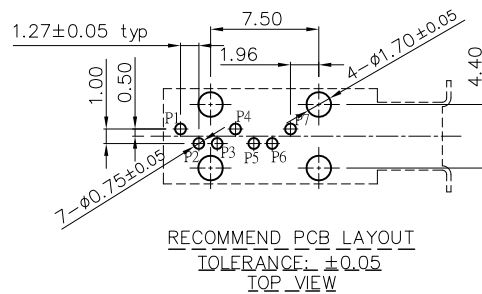
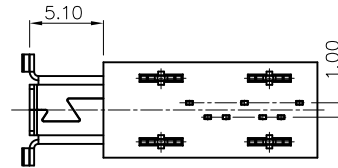
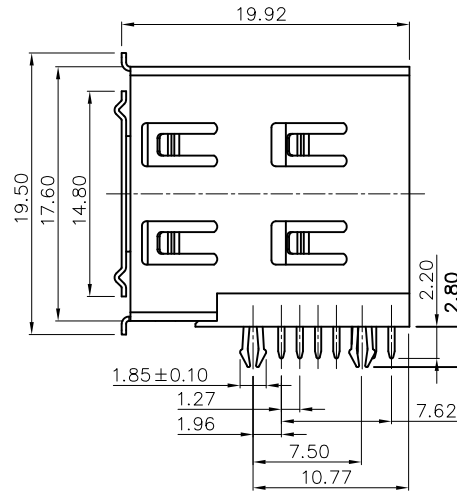
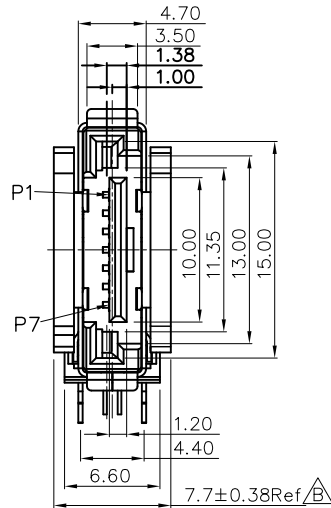


REV.	DESCRIPTION	DATE
A	N13'03052	Mar 22,2013
B	N13'08018	Aug 09,2013
C	N16'04011	Apr 13,2016



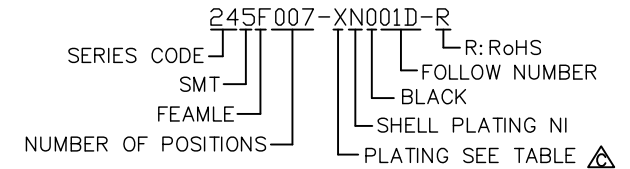
MATERIALS:

- HOUSING: THERMOPLASTIC (UL94V-0) BLACK.
- TERMINAL: COPPER ALLOY,
 PLATING: GOLD PLATING ON CONTACT AREA.
TIN PLATING ON SOLDER TAILS.
NICKEL UNDERPLATING OVER ALL
- SHELL: COPPER ALLOY,
PLATING: NICKEL PLATING OVER ALL

SPECIFICATION

- CURRENT RATING : 1.5A MAX.
- DIELECTRIC WITHSTANDING VOLTAGE :
500V AC R.M.S. FOR ONE MINUTE.
- CONTACT RESISTANCE : 30mΩ MAX.
- INSULATION RESISTANCE :
1000 MΩ MIN. AT 500V DC.
- OPERATING TEMPERATURE : -25°C TO +85°C.

PART NUMBER INFORMATION :



DESCRIPTION OF PLATING ON TERMINALS			
NO.	EXPLAIN	NO.	EXPLAIN
0	GOLD FLASH	3	GOLD 15u"
6	GOLD 30u"		
TOLERANCE		DRAWER	
.0=±0.38		<i>Duan</i>	
.00=±0.25		CHECK	
.000=±0.15		<i>Stony</i>	
ANG.=±3°		APP'D	
		<i>Stony</i>	
UNITS : mm		PRODUCT SPEC.	
		—	
SCALE NONE		DRAW NO.	
SIZE A6		R245F007-XN001D-R	
SHEET 1 OF 1		REV. C	



E SATA 7P FEMALE