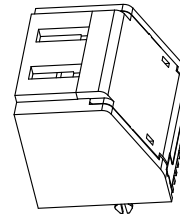
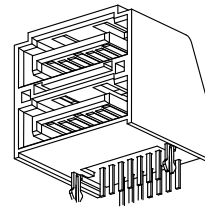
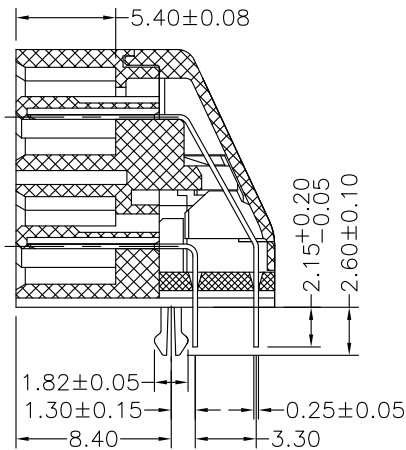
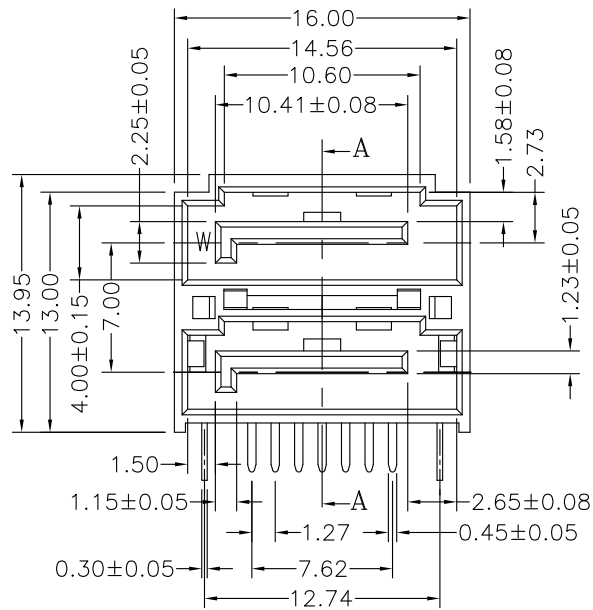


REV.	DESCRIPTION	DATE
A	RELEASE	Jan. 08, 2020

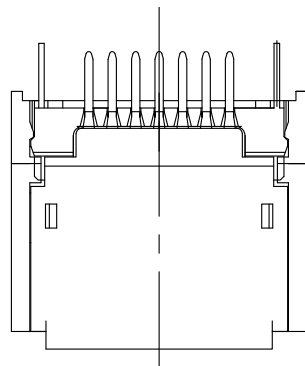
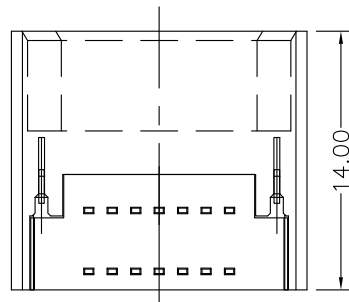


MATERIALS

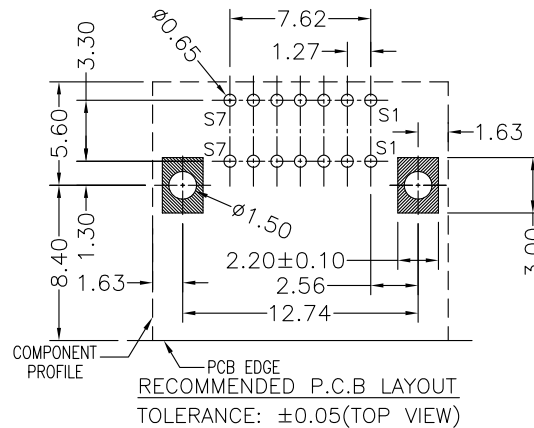
- HOUSING : THERMOPLASTIC, (UL 94V-0). BLACK.
- TERMINAL : BRASS, GOLD PLATED ON CONTACT AREA, TIN PLATED ON SOLDER TAILS, NICKEL UNDER PLATED OVER ALL.
- BOARDLOCK : BRASS, TIN PLATED.

SPECIFICATION

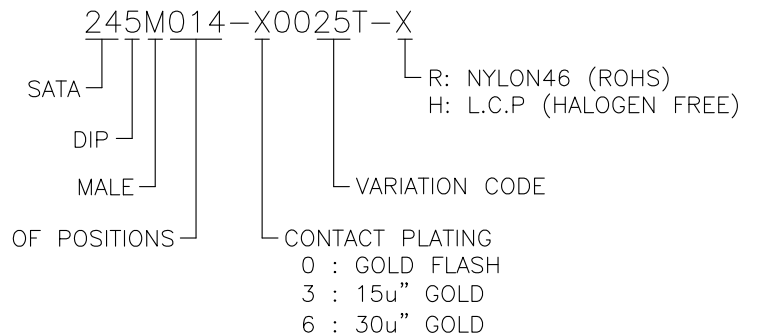
- CURRENT RATING : 1.5 AMPERE PER CONTACT.
- RATING VOLTAGE : 100V AC. MAX.
- DIELECTRIC WITHSTANDING VOLTAGE : 500V AC R.M.S. FOR ONE MINUTE.
- INSULATION RESISTANCE : 1000M OHMS MIN.
- CONTACT RESISTANCE : 30m OHMS MAX.
- OPERATING TEMPERATURE : -55°C TO +85°C.



SIGNAL SEGMENT	
NAME	TYPE
S1	GND
S2	A+
S3	A-
S4	GND
S5	B-
S6	B+
S7	GND



PART NUMBER INFORMATION :



TOLERANCE .0=±0.35 .00=±0.25 .000=±0.15 .0000=±.0000±. ANG.=±3°		DRAWER <i>K&N</i>		 WWW.ASTRON.COM.TW
 UNITS : mm		CHECK <i>ERP</i>		
SCALE NONE		APP'D <i>ALAN</i>		DRAW NO. 245M014-X0025T-X
SIZE A4		PRODUCT SPEC. ---		
		REV. A		08001