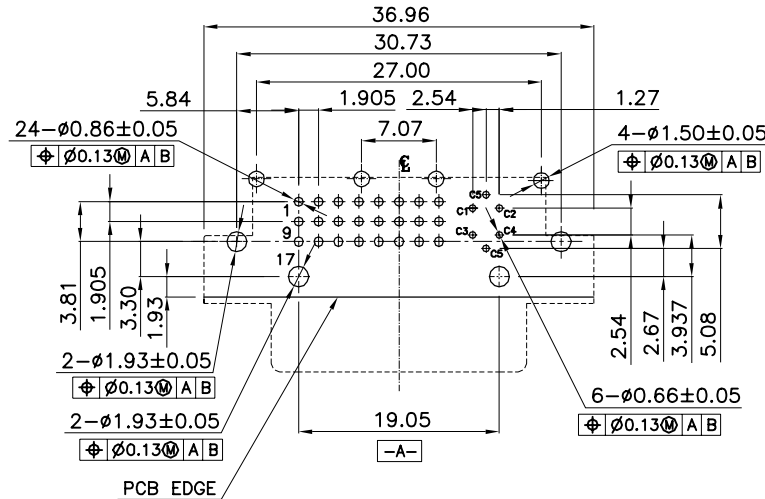
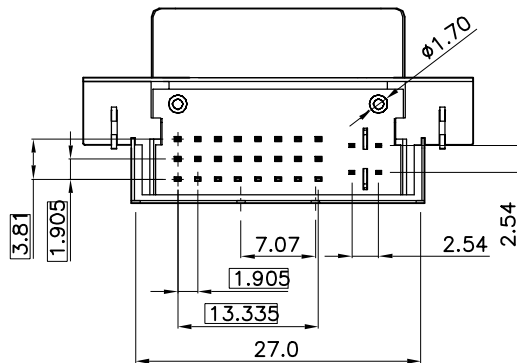
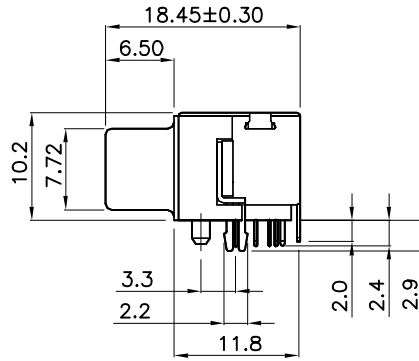
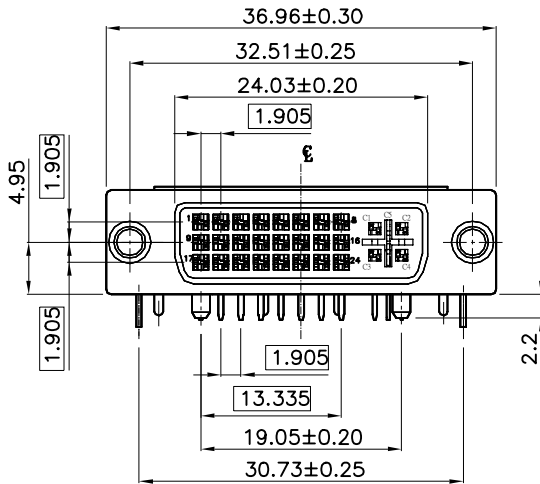


REV.	DESCRIPTION	DATE
A	RELEASE	Nov 11, 2011



RECOMMEND PCB LAYOUT  
TOLERANCE: ±0.05  
TOP VIEW

### MATERIALS

1. HOUSING: THERMOPLASTIC (UL 94V-0).
2. COVER: THERMOPLASTIC (UL 94V-0).
3. TERMINAL: COPPER ALLOY,  
PLATING: GOLD PLATED ON CONTACT AREA,  
TIN PLATED ON SOLDER TAILS,  
NICKEL UNDER PLATED OVERALL.
4. BOARD LOCK: SPCC, TIN PLATED OVER NICKEL.
5. SHELL: SPCC, NICKEL PLATED OVERALL.
6. RIVET: Zn ALLOY, NICKEL PLATED OVERALL.

### SPECIFICATION


1. MATING FORCE: 4.5KG/MAX.
2. UNMATING FORCE: 1.0-4.0KG.
3. DIELECTRIC WITHSTANDING VOLTAGE:  
500V AC R.M.S. FOR ONE MINUTE.
4. INSULATION RESISTANCE:  
1000MΩ MIN AT 500V DC.
5. CONTACT RESISTANCE: 30mΩ MAX.
6. OPERATING TEMPERATURE : -25°C TO +85°C.

256F029-XXN02D-R

SERIES CODE ————  
DIP 90° ————  
FEMALE ————  
NUMBER OF POSITIONS ————

RoHS ————  
FOLLOW NUMBER ————  
0: BLACK ————  
F: BEIGE ————  
SHELL: NICKEL PLATED  
PLATING SEE TABLE

DESCRIPTION OF PLATING ON TERMINALS			
NO.	EXPLAIN	NO.	EXPLAIN
0	GOLD FLASH	3	GOLD 15u"
1	GOLD 5u"	4	GOLD 20u"
2	GOLD 10u"	6	GOLD 30u"

TOLERANCE .0=±0.25 .00=±0.15 .000=±0.05 ANG.=±3°	DRAWER <i>Lim</i> CHECK <i>Henry</i> APP'D <i>Fason</i>	 ASTRON TECHNOLOGY CORP. NAME DVI FEMALE 29P DIP TYPE WITH BACK SHELL
UNITS : mm	PRODUCT SPEC.	
SCALE NONE	SIZE A5	DRAW NO. R256F029-XXN0/F02D-R
SHEET 1 OF 1	REV. A	