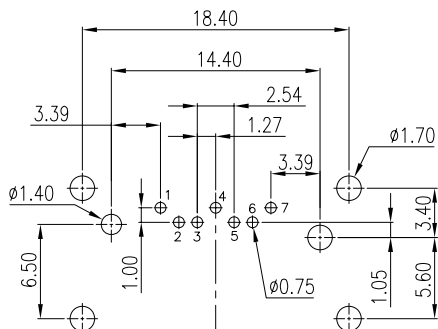
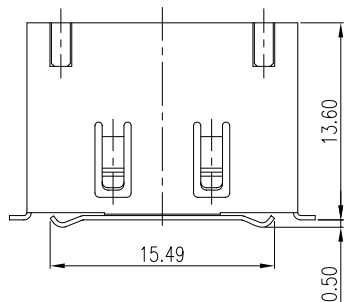


REV.	DESCRIPTION	DATE
A	RELEASE	Dec 13, 2011



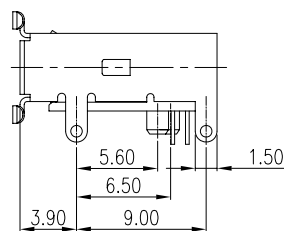
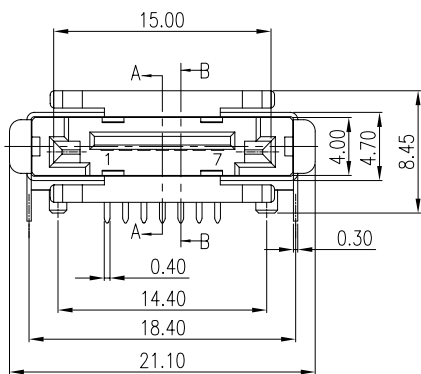
RECOMMEND PCB LAYOUT
TOLERANCE: ± 0.05
TOP VIEW

MATERIALS:

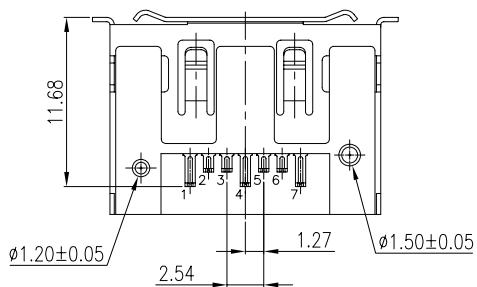
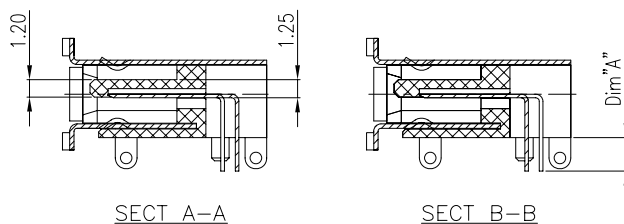
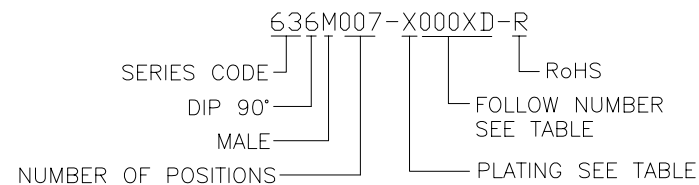
1. HOUSING : THERMOPLASTIC (UL 94V-0).BLACK.
2. TERMINAL : COPPER ALLOY
PLATING : GOLD PLATED ON CONTACT AREA,
TIN PLATED ON SOLDER TAILS,
NICKEL UNDER PLATED.

SPECIFICATION

1. CURRENT RATING : 1.5 A MAX.
2. DIELECTRIC WITHSTANDING VOLTAGE :
500V AC R.M.S. FOR ONE MINUTE.
3. INSULATION RESISTANCE : 1000M Ω MIN.
4. CONTACT RESISTANCE : 30m Ω MAX.
5. INSERTION FORCE: 40N MAX.
6. WITHDRAWAL FORCE: 10N MIN.
7. DURABILITY: 2500 CYCLES.
8. OPERATING TEMPERATURE : -55°C TO +125°C.



PART NUMBER INFORMATION :



DIM.A	(PART NUMBER)
2.35mm	636M007-X0003D-R
3.10mm	636M007-X0004D-R

PIN	SIGNAL NAME
P1	GND
P2	RX+
P3	RX-
P4	GND
P5	TX-
P6	TX+
P7	GND

DESCRIPTION OF PLATING ON TERMINALS			
NO.	EXPLAIN	NO.	EXPLAIN
0	GOLD FLASH	3	GOLD 15u"
6	GOLD 30u"		

TOLERANCE .0=±0.38 .00=±0.25 .000=±0.20 ANG.=±3°	DRAWER <i>JJNG</i>	 Astron ASTRON TECHNOLOGY CORP. NAME eSATA 7PIN R/A DIP MALE, REVERSE TYPE DRAW NO. R636M007-X0003(04)D-R
	CHECK APP'D	
UNITS : mm SCALE NONE SIZE A6 SHEET 1 OF 1 REV. A	PRODUCT SPEC. _____	