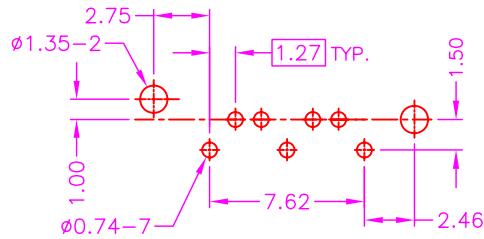
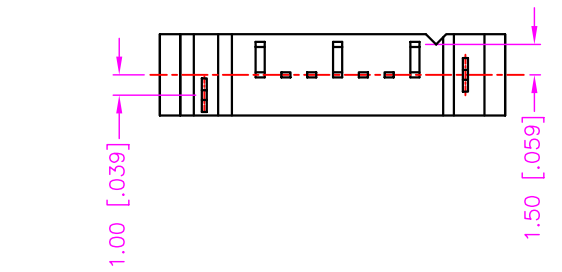
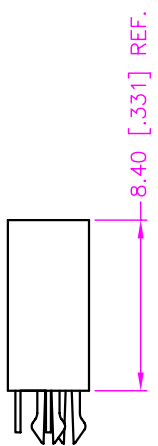
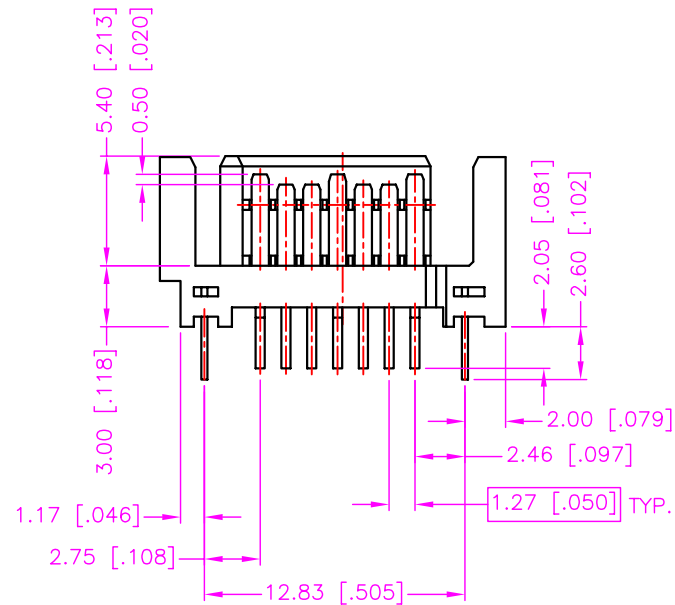
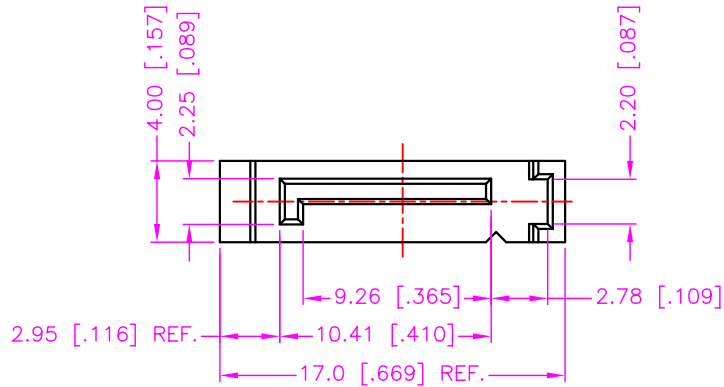


REV.	DESCRIPTION	DATE
A	RELEASE	Jan. 24, 2005
B	RoHS MODIFY	Jun. 17, 2005
C	DRAW MODIFY	Jan. 10, 2006
D	DRAW MODIFY	Feb. 07, 2007



RECOMMEND P.C.B. LAYOUT  
TOP VIEW

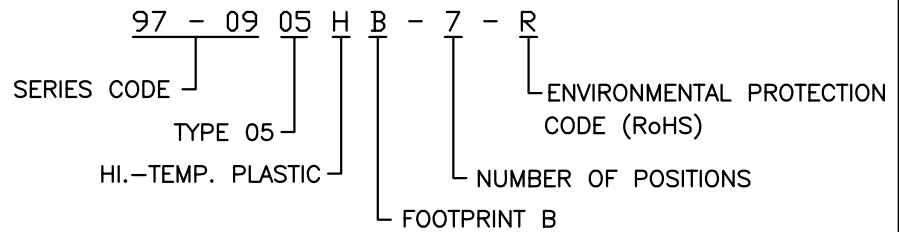
### MATERIALS

1. HOUSING : L.C.P (UL 94V-0), BLACK.
2. TERMINAL : BRASS, GOLD PLATING ON CONTACT AREA, TIN PLATING ON SOLDER TAIL. (t=0.25mm)
3. FORK : BRASS, TIN PLATING. (t=0.30mm)

### SPECIFICATION

1. CURRENT RATING : 1.5 AMP. MAX.
2. DIELECTRIC WITHSTANDING VOLTAGE : 500V AC R.M.S. FOR ONE MINUTE.
3. INSULATION RESISTANCE : 1000M OHMS MIN. AT 500V DC.
4. OPERATING TEMPERATURE : -40°C TO +85°C.

### ORDER INFORMATION :



TOLERANCE .0=±0.30 [.012] .00=±0.20 [.008] .000=±.XXX .0000=±. ANG.=±3°		DRAWER <i>NFKCJ</i>	<b>Astron</b> <b>WWW.ASTRON.COM.TW</b>
UNITS : mm [inch]		CHECK <i>B&amp;N</i>	
SCALE NONE	SIZE A4	APP'D <i>ERP</i>	NAME SERIAL ATA CONNECTOR P.C.B. MOUNT VERTICAL, SIGNAL PLUG STRAIGHT, FOOTPRINT B
SHEET 1 OF 1	REV. D	PRODUCT SPEC. —	DRAW NO. C97-0905HB-7-R
			08001