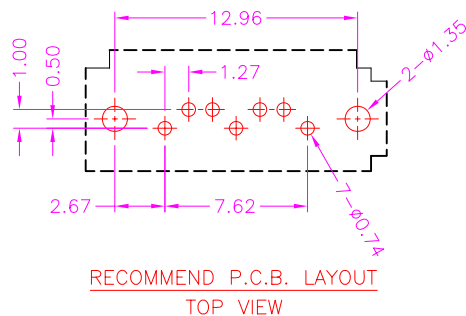
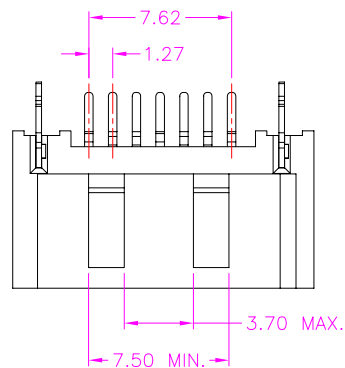


REV.	DESCRIPTION	DATE
A	RELEASE	Nov. 15, 2005
B	DRAW. MODIFY	Dec 08, 2005
C	MATERIAL MODIFY	Jul. 06, 2010
D	DRAW. MODIFY	Feb. 17, 2012



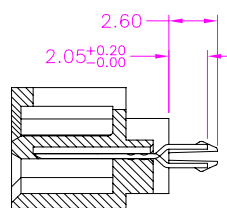
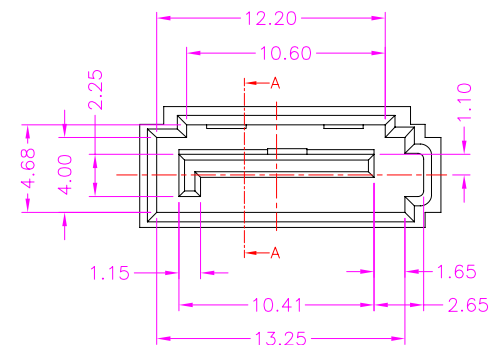
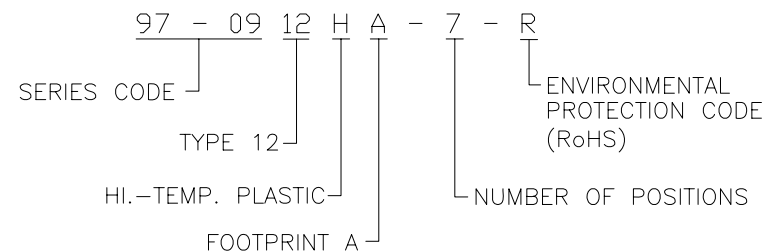
### MATERIALS

- HOUSING : L.C.P. (UL 94V-0), BLACK.
- TERMINAL : BRASS (t=0.25mm), GOLD FLASH ON CONTACT AREA, TIN PLATED ON SOLDER TAIL, UNDER NICKEL PLATED OVER ALL.
- BOARDLOCK : BRASS (t=0.30mm), TIN PLATED ON SOLDER TAIL,

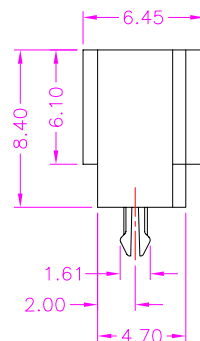
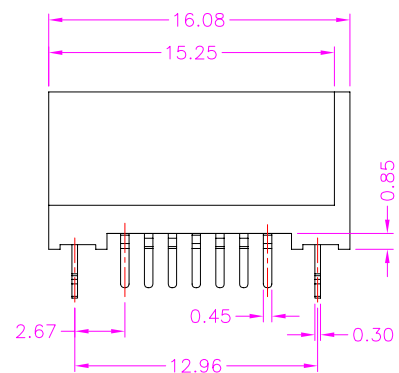
### SPECIFICATION

- CURRENT RATING : 1.5 AMP. MAX.
- VOLAGE RATING : 12V AC
- DIELECTRIC WITHSTANDING VOLTAGE : 500V AC R.M.S. FOR ONE MINUTE.
- INSULATION RESISTANCE : 1000M OHMS MIN. AT 500V DC.
- CONTACT RESISTANCE : 30m OHMS MAX.
- OPERATING TEMPERATURE : -25°C TO +85°C.

### PART NUMBER INFORMATION :



SECTION A-A



TOLERANCE .0=±0.38 .00=±0.25 .000=±.XXX .0000=±. ANG.=±3°		DRAWER <i>JINJ</i>	 <b>WWW.ASTRON.COM.TW</b>
		CHECK <i>JANPE</i>	
UNITS : mm [inch]		APP'D <i>BEN</i>	DRAW NO. C97-0912HA-7-R
SCALE NONE	SIZE A4	SHEET 1 OF 1	REV. D
		14003	